



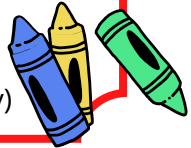
PHA GRADE LEVEL SUPPLY LISTS

- **All students** will need a clear or mesh book bag. The following must be brought to Open House: 4 tissue boxes, 4 paper towels, 1 pack of dry erase markers, & 3 reams of copy paper. Write your child's name on all supplies.

2
0
2
5
-

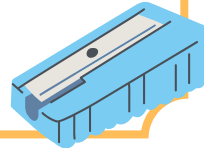
KINDERGARTEN

- #2 pencils, 24 count
- round tip scissors
- Clorox or baby wipes
- crayons, 24 count
- 12" Ruler
- 4 glue sticks
- 4 composition notebooks
- 3 plastic folder with pockets
- 4 pink erasers
- 1 pencil box
- sharpener
- Bible NIV version
- reusable water bottle(daily)



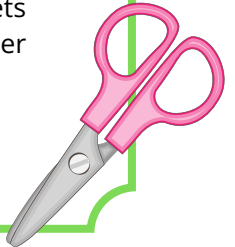
1ST GRADE

- #2 pencils, 24 count, pre sharpened
- scissors
- colored pencils
- crayons, 24 count
- 12" ruler
- 2 sharpeners
- 7 composition notebooks
- 1 wide ruled loose leaf paper
- 4 plastic folders with pockets
- 4 glue sticks
- 4 pink erasers
- 1 pencil box
- Bible NIV version



2ND GRADE

- #2 pencils, 24 count, pre sharpened
- scissors
- colored pencils
- crayons, 24 count
- 12" ruler
- 2 sharpeners
- 7 composition notebooks
- 4 plastic folders with pockets
- 1 wide ruled loose leaf paper
- 4 glue sticks
- 4 pink erasers
- 1 pencil box
- Bible NIV version



2
0
2
6

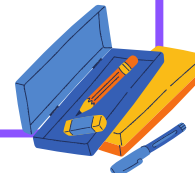
3RD GRADE

- pencils and erasers
- scissors
- colored pencils
- highlighters
- crayons
- 12" ruler
- 7 composition notebooks
- 4 plastic folders with pockets
- 2 wide ruled loose leaf paper
- 4 glue sticks
- index cards
- 1 pencil box
- Bible NIV version



4TH - 5TH GRADE

- pencils with erasers
- red, blue and black pens
- scissors
- color pencils
- 12" ruler
- 7 composition notebooks
- 5 plastic folders with pockets
- 2 wide ruled loose leaf paper
- glue sticks
- highlighters
- index cards
- 1 pencil box
- pocket dictionary
- Bible NIV version



6TH -12TH GRADE

- pencils and erasers
- blue, black and red pens
- colored pencils
- ruler
- scientific calculator
- 7 composition notebooks
- 2 plastic folders with pockets
- index cards
- highlighters
- Bible NIV version
- compass and protractor
- loose leaf paper

